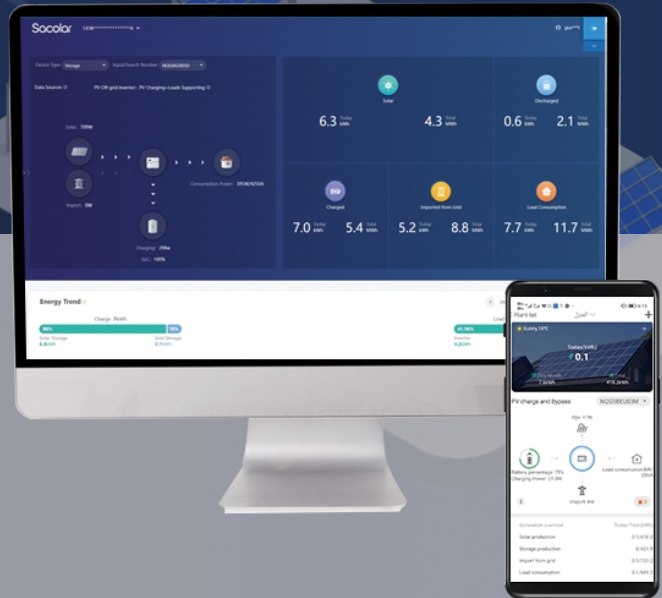


PVbutler Web/APP

Monitoring Solution

MAIN FEATURES

- ▶ Easy to use
- ▶ Quick overview of all PV plants status
- ▶ Monitor and record several of PV plants with centralized management
- ▶ Professional analysis function to help maximize the system performance
- ▶ Real-time access to key performance worldwide via PC or mobile phones



Introduction

Sacolar can manage to deliver a satisfactory monitoring solution based on PVbutler server. PVbutler provides access to key system data at anytime and any place.



Android & iOS

SPECIFICATION

PVbutler Web

System Requirements

Supported Operating Systems	All
Recommended Browsers	Internet Explorer, Google Chrome, Firefox, Opera, Safari
Supported Data Logger	CubeWiFi, CubeGPRS

Access

Website	server.PVbutler.com
---------	---------------------

Plant Information

Plant Overview	Quick yield overview of all your PV plants
Specified Plant	All important data at a glance including energy output, yield gains, environmental status
Plant Installation Data	Summary of all plant information which contains installation date, location date and income data
Device Overview	Display of all important data about datalogger, inverters, environment monitor, smart meter, etc
Time Periods	5 mins

Plant Management

Account	User can manage all PV plants with one same account
Monitoring	
Inverters Status	All inverter running status are recorded automatically, The warning of fault is immediate and highlighted

Status Reporting

Event Reports	Timely email reports on system fault and plant error
---------------	--

Background Operating

Plant Management	Add new plant, edit and delete existed plant
Device Management	Intuitive operation to manage all devices
Inverter Setting	Simple parameter setting for inverters including power management

Pvbutler APP

General Data

Supported Operating Systems	Android / ios
Source of Data	server.pvbutler.com

Plant Information

Plant Overview	Quick yield overview of all your PV plants
Specified Plant	All important data at a glance including energy output, environmental status
Plant Installation Data	Summary of all plant information which contains installation data, location data and income data
Device Overview	Display of all important data about datalogger, inverters, environment monitor, smart meter, etc
Plant Enver Log	Display of all the warning events of the plant

Application Parameters

Inverter Data	All inverter running status and data could be obtained at any time
Environment Monitor Data	Key parameter about environment could be obtained
Electric Meter Data	Primary parameters at the point of connection are collected in every measured period